

OFFICE RENOVATION

2000 TECHNOLOGY DR
PITTSBURGH, PA 15219

CONSULTANT

ZONING PERMIT

lga PARTNERS
1425 Forbes Ave. Suite 400 Pittsburgh, PA 15219
P 412.263.3430 F 412.224.4747

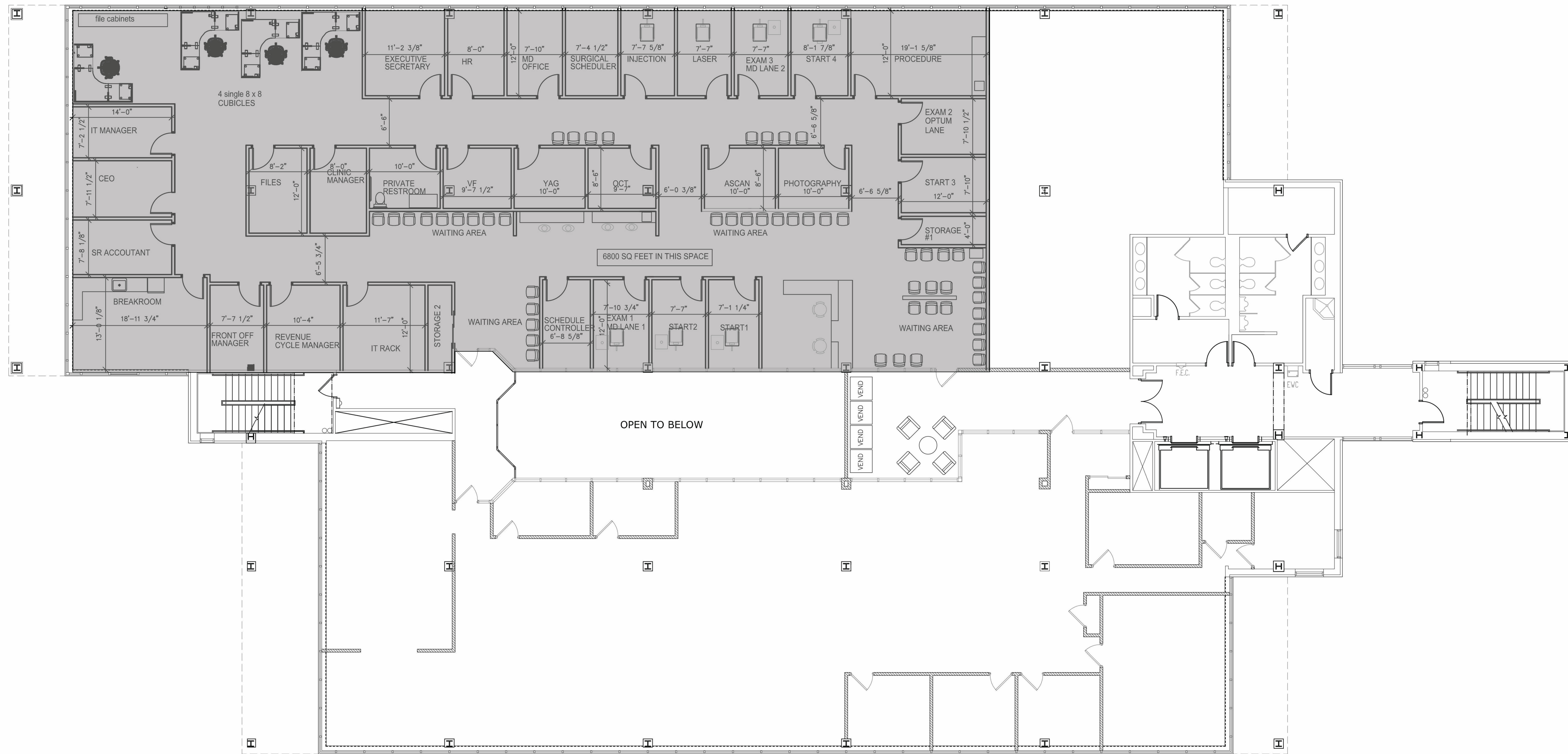
These drawings are instruments of the Architect's service and are the property of LGA Partners. They shall not be reproduced or used in any way, whatsoever, without the written permission of LGA Partners. © 2023

| NO. | DATE | DESCRIPTION |
|-----|------|---------------------|
| | | REVISION DATES |
| | | 09/27/23 |
| | | ORIGINAL ISSUE DATE |

PROJECT NO.: 23324
 DRAWN BY: Author

PROPOSED USE AREA

SK01



PROPOSED USE AREA

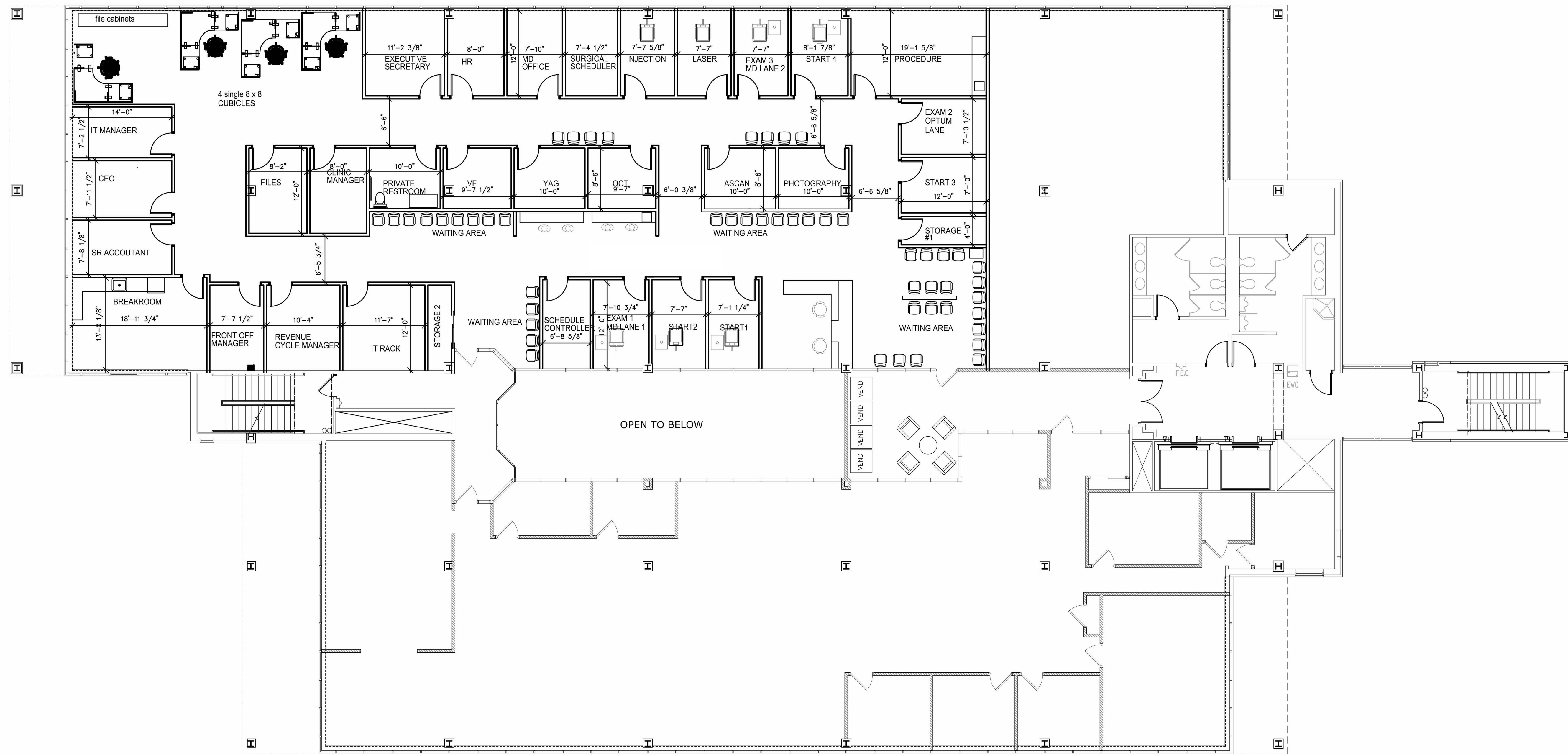
SCALE: 1/8" = 1'-0"

| NO. | DATE | DESCRIPTION |
|-----|----------|---------------------|
| | | REVISION DATES |
| | 09/27/23 | |
| | | ORIGINAL ISSUE DATE |

| | |
|--------------|--------|
| PROJECT NO.: | 23324 |
| DRAWN BY: | Author |

PROPOSED FLOOR
PLAN

SK02



PROPOSED SECOND FLOOR PLAN

SCALE: 1/8" = 1'-0"